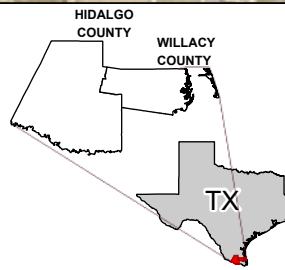
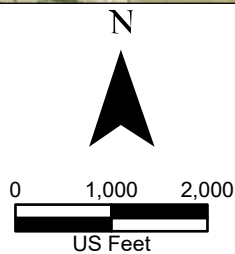


**Legend:**

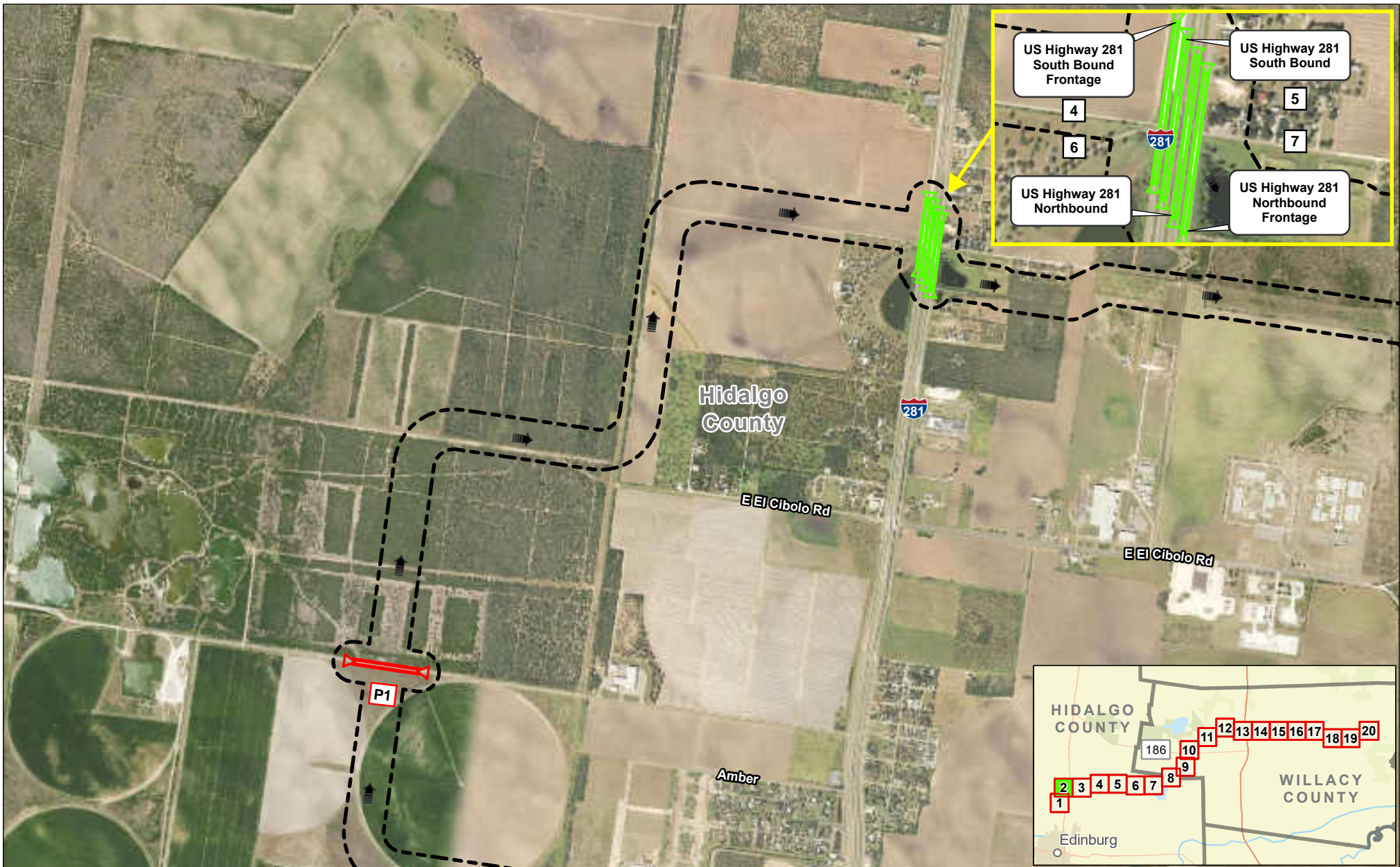
- Study Corridor
- Drain Flow
- Existing Drainage Crossing
- Crossing Number



**Exhibit 14  
Alternative 2 Existing  
and Proposed Crossings  
Sheet 1 of 20  
Raymondville Drain Project**

Author : Joel F. Aguirre      Updated : 10/10/2023

*DISCLAIMER: RRP Consulting Engineers makes no guarantees as to the accuracy of data used in the construction of this map.*



**Legend:**

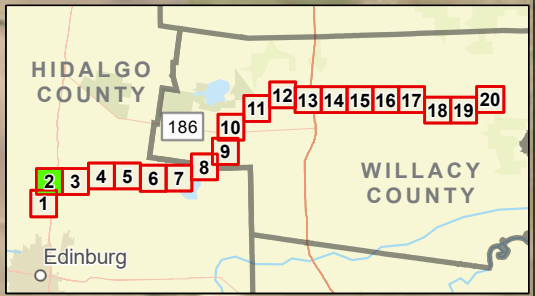
- Study Corridor
- Drain Flow
- Existing Drainage Crossing
- Proposed Drainage Crossing
- Crossing Number

N

0 1,000 2,000  
US Feet

HIDALGO COUNTY  
WILLACY COUNTY

TX

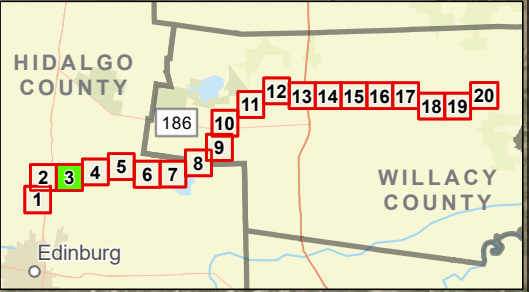
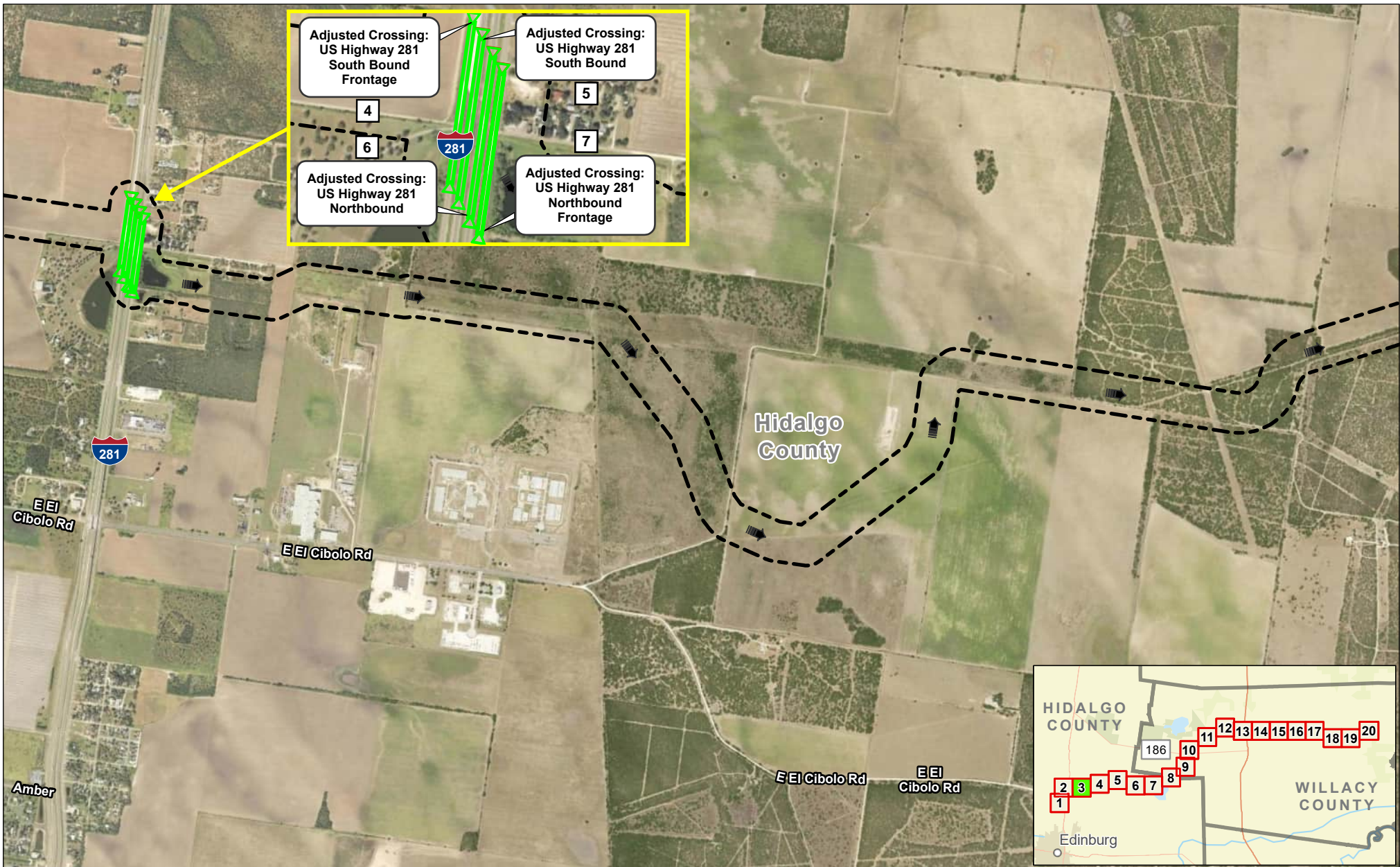


## Exhibit 14 Alternative 2 Existing and Proposed Crossings Sheet 2 of 20 Raymondville Drain Project

Author : Joel F. Aguirre      Updated : 1/2/2024

DISCLAIMER: RRP Consulting Engineers makes no guarantees as to the accuracy of 3rd party data used in the construction of this map.

Path: S:\project\4408000\_Project\Raymondville\GIS\PDF\_Export\Exh\_14\_Sheet\_2.aprx



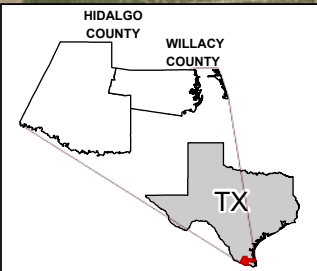
**Legend:**

- Study Corridor
- Drain Flow
- Existing Drainage Crossing
- Crossing Number

N

0      1,000      2,000

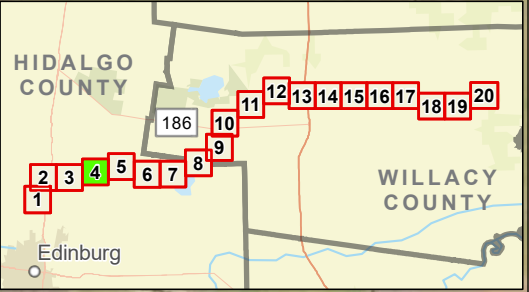
US Feet



## Exhibit 14 Alternative 2 Existing and Proposed Crossings Sheet 3 of 20 Raymondville Drain Project

Author : Joel F. Aguirre      Updated : 10/10/2023

DISCLAIMER: RRP Consulting Engineers makes no guarantees as to the accuracy of data used in the construction of this map.



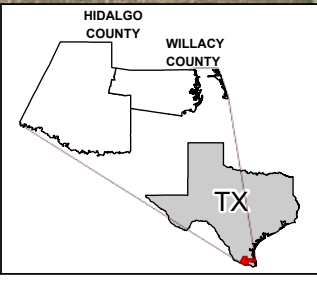
**Legend:**

- Study Corridor
- Drain Flow
- Existing Drainage Crossing
- Proposed Drainage Crossing
- Crossing Number

N

0      1,000      2,000

US Feet

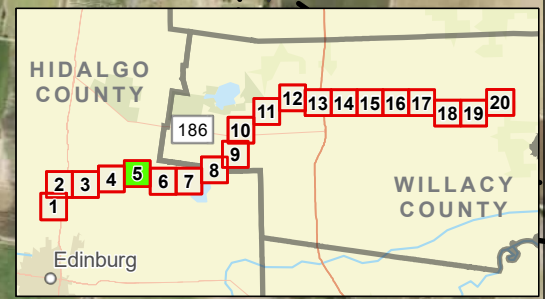
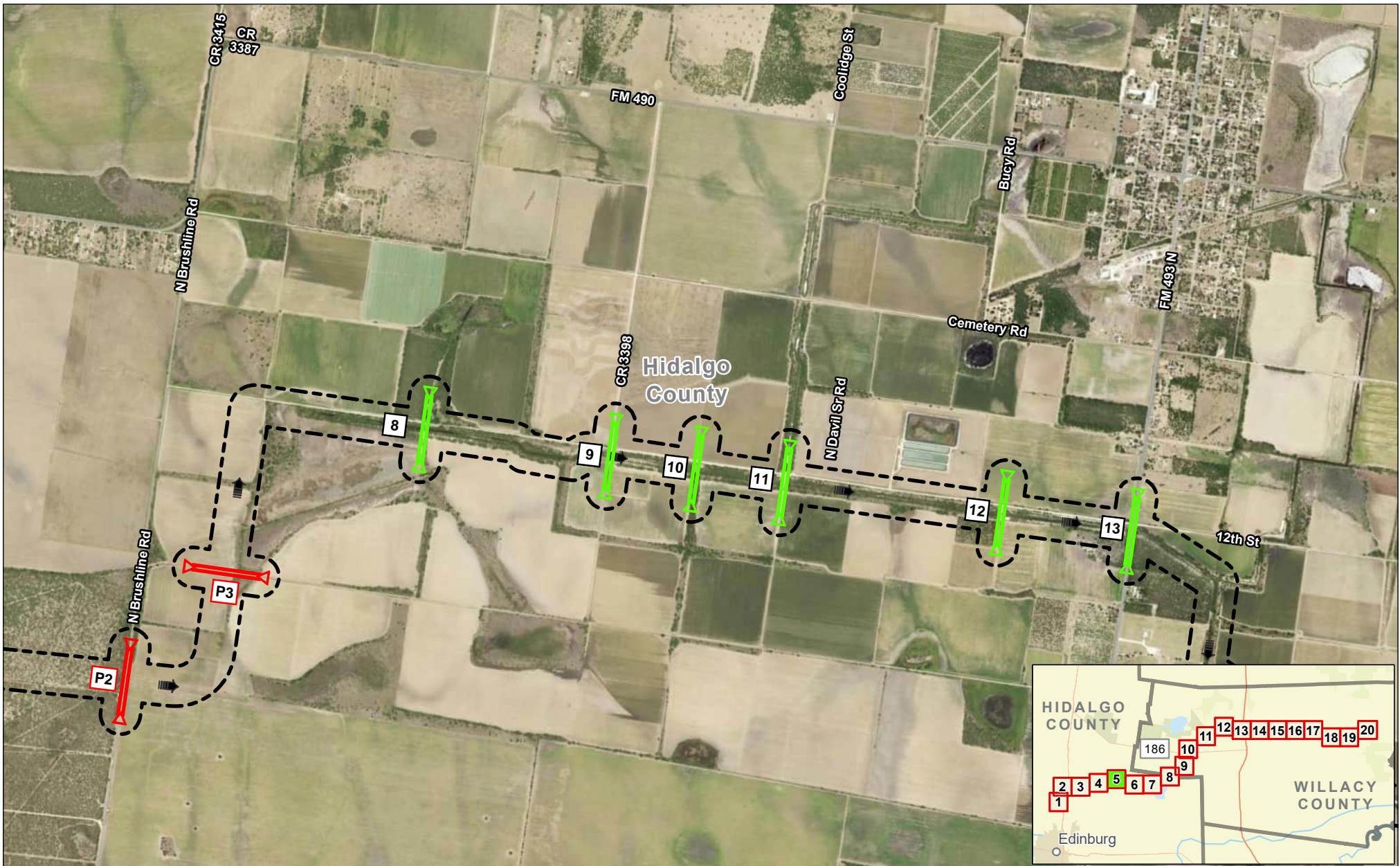


## Exhibit 14 Alternative 2 Existing and Proposed Crossings Sheet 4 of 20 Raymondville Drain Project

Author : Joel F. Aguirre      Updated : 10/10/2023

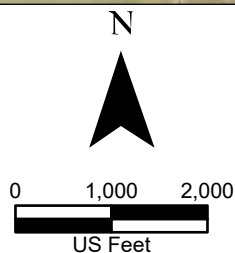
DISCLAIMER: RRP Consulting Engineers makes no guarantees as to the accuracy of data used in the construction of this map.

Path: S:\project\440800\_Project\Raymondville\GIS\PDF\_Books\Exh\_Sheet\_4.aprx



**Legend:**

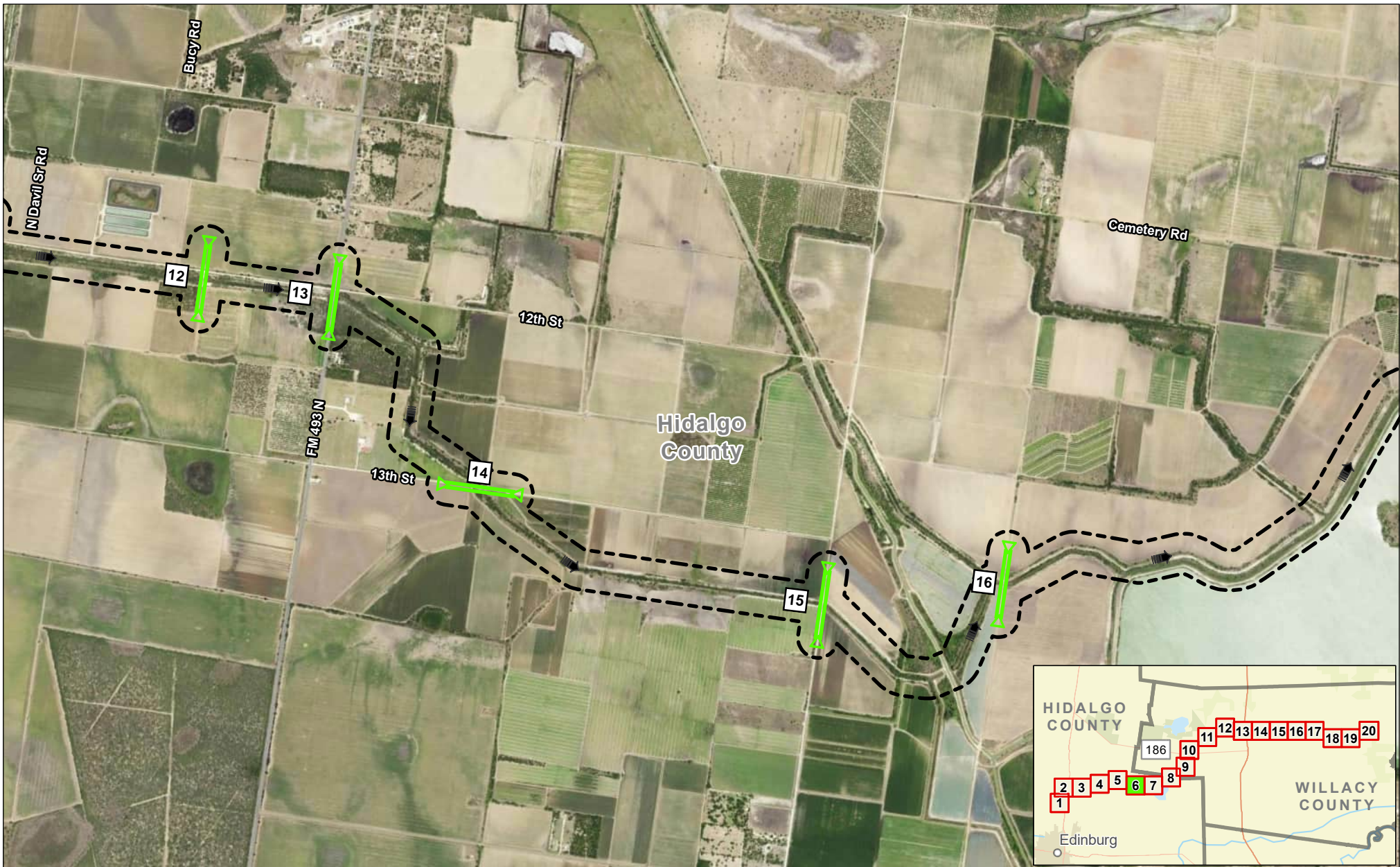
- Study Corridor
- Drain Flow
- Existing Drainage Crossing
- Proposed Drainage Crossing
- Crossing Number



## Exhibit 14 Alternative 2 Existing and Proposed Crossings Sheet 5 of 20 Raymondville Drain Project

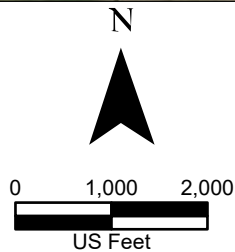
Author : Joel F. Aguirre      Updated : 10/10/2023

DISCLAIMER: RRP Consulting Engineers makes no guarantees as to the accuracy of data used in the construction of this map.



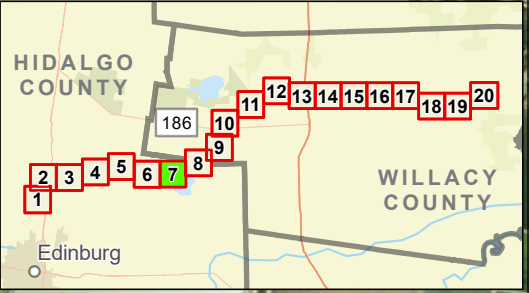
**Legend:**

- Study Corridor
- Drain Flow
- Existing Drainage Crossing
- # Crossing Number



## Exhibit 14 Alternative 2 Existing and Proposed Crossings Sheet 6 of 20 Raymondville Drain Project

Author : Joel F. Aguirre      Updated : 10/10/2023  
 DISCLAIMER: RRP Consulting Engineers makes no guarantees as to the accuracy of data used in the construction of this map.



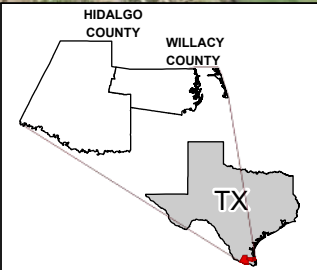
**Legend:**

- Study Corridor
- Drain Flow
- Existing Drainage Crossing
- Crossing Number

N

0    1,000    2,000

US Feet



## Exhibit 14 Alternative 2 Existing and Proposed Crossings Sheet 7 of 20 Raymondville Drain Project





Author : Joel F. Aguirre	Updated : 10/10/2023
--------------------------	----------------------

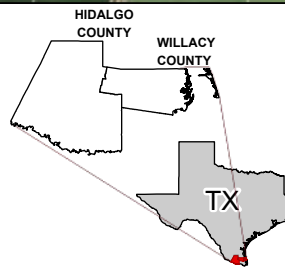
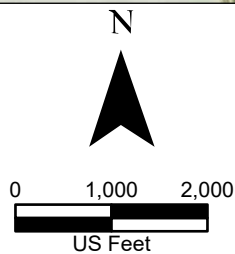
DISCLAIMER: RRP Consulting Engineers makes no guarantees as to the accuracy of data used in the construction of this map.

Path: S:\project\4408000\_ProposedRaymondvilleDrain\Drawings\Drawings.dwg



**Legend:**

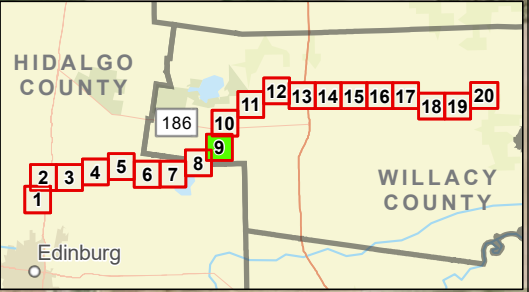
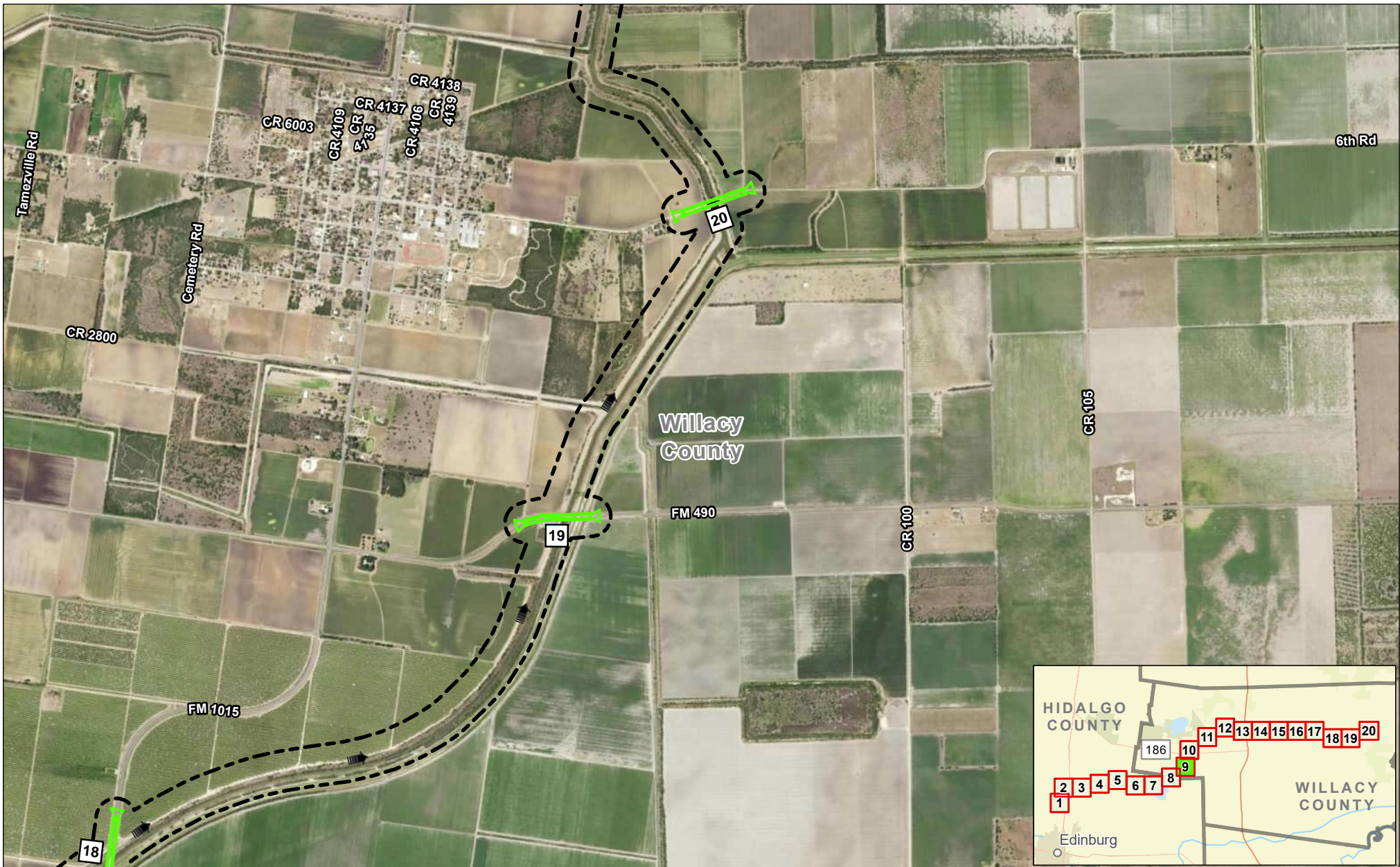
-  Study Corridor
-  Drain Flow
-  Existing Drainage Crossing
-  Crossing Number



**Exhibit 14**  
**Alternative 2 Existing**  
**and Proposed Crossings**  
**Sheet 8 of 20**  
**Raymondville Drain Project**

Author : Joel F. Aguirre      Updated : 10/10/2023

*DISCLAIMER: RRP Consulting Engineers makes no guarantees as to the accuracy of data used in the construction of this map.*

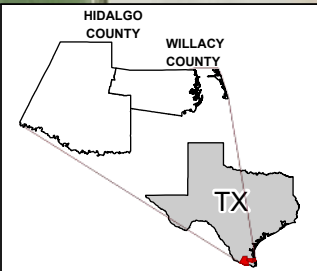


**Legend:**

- Study Corridor
- Drain Flow
- Existing Drainage Crossing
- Crossing Number

N

0 1,000 2,000  
US Feet

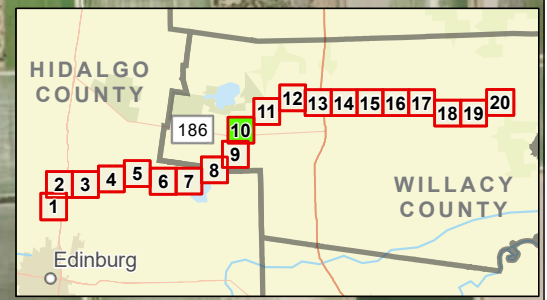


## Exhibit 14 Alternative 2 Existing and Proposed Crossings Sheet 9 of 20 Raymondville Drain Project





Author : Joel F. Aguirre      Updated : 10/10/2023

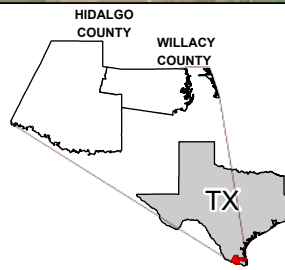
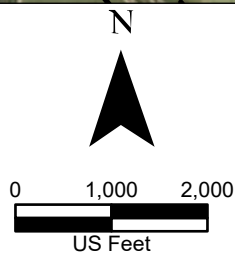
DISCLAIMER: RRP Consulting Engineers makes no guarantees as to the accuracy of data used in the construction of this map.

Path: S:\projects\4408000\_ProjectInventory\GIS\FOP\_Enables\Enb\_Series.aprx



**Legend:**

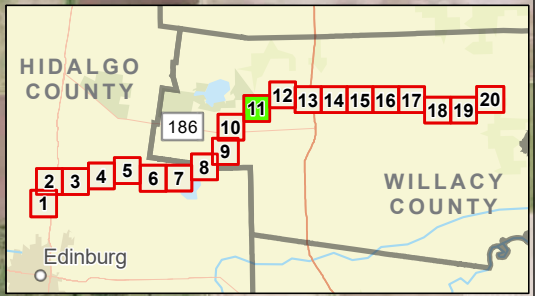
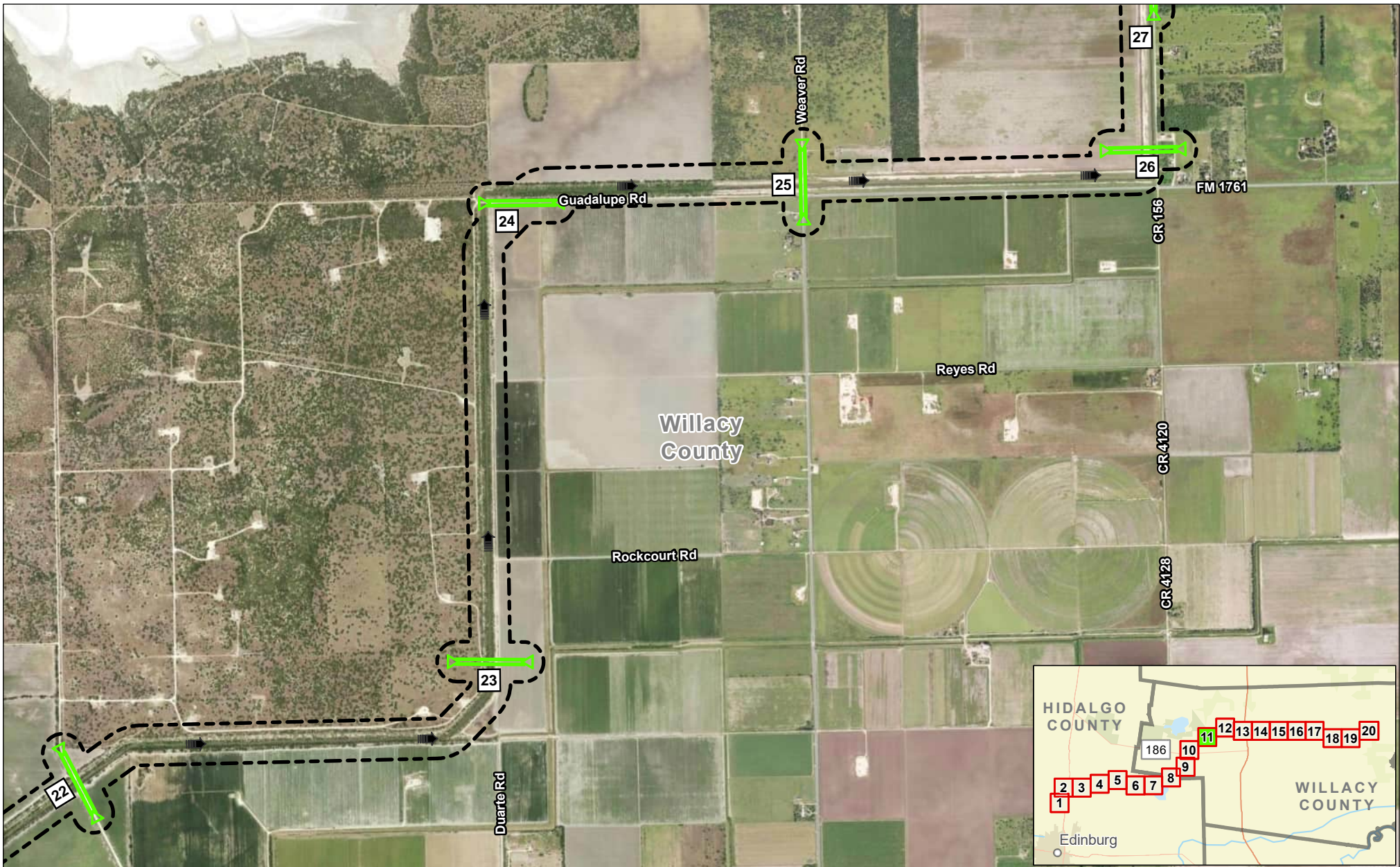
-  Study Corridor
-  Drain Flow
-  Existing Drainage Crossing
-  Crossing Number



## Exhibit 14 Alternative 2 Existing and Proposed Crossings Sheet 10 of 20 Raymondville Drain Project

Author : Joel F. Aguirre      Updated : 10/10/2023

DISCLAIMER: RRP Consulting Engineers makes no guarantees as to the accuracy of data used in the construction of this map.



**Legend:**

- Study Corridor
- Drain Flow
- Existing Drainage Crossing
- Crossing Number

N

0      1,000      2,000

US Feet

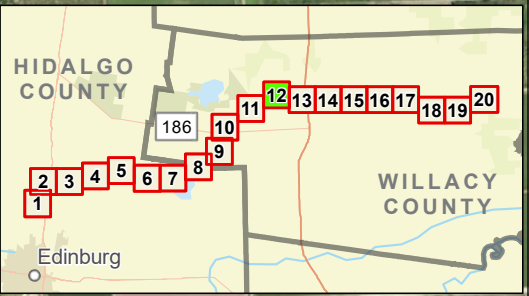
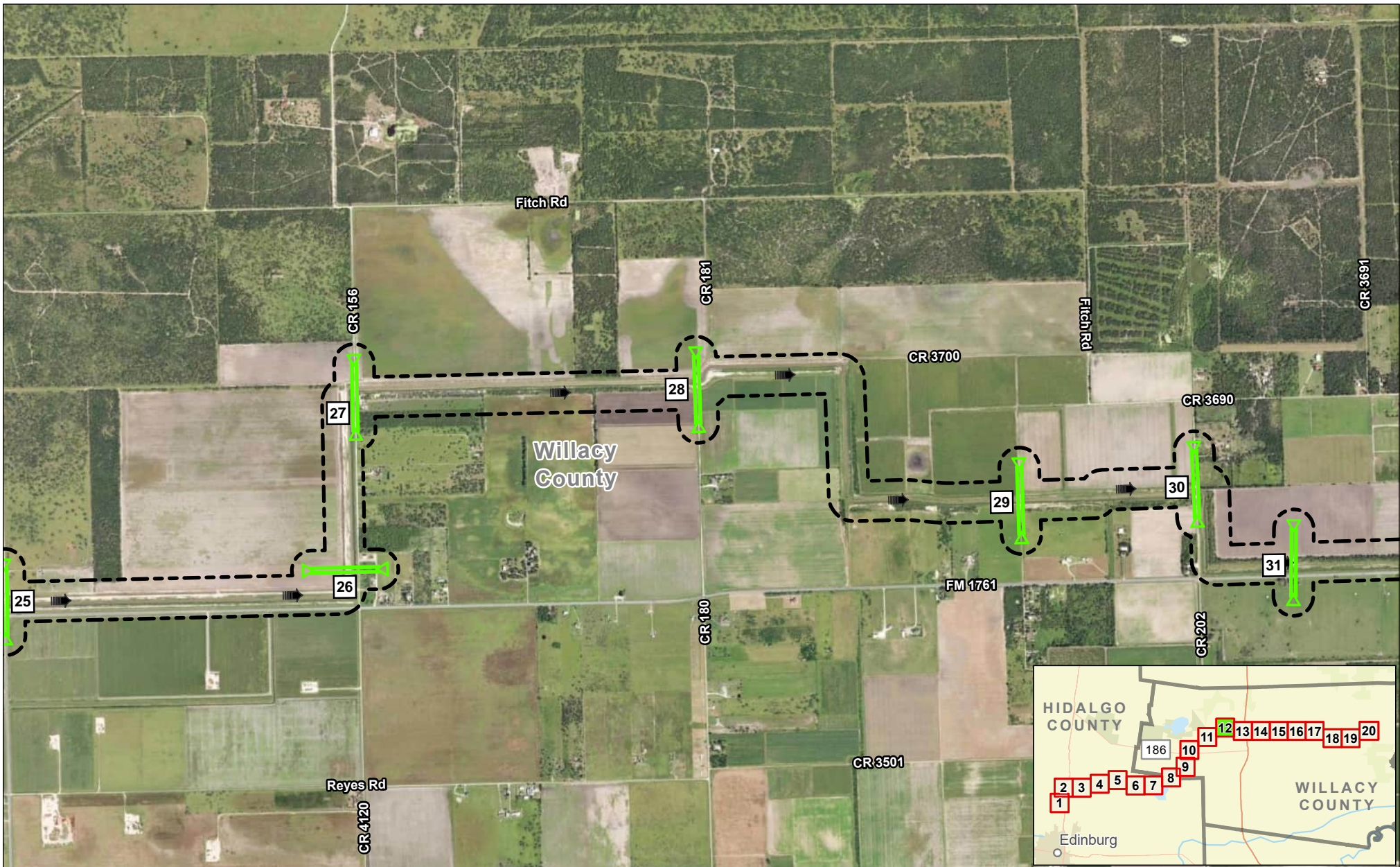
HIDALGO COUNTY  
WILLACY COUNTY

TX

## Exhibit 14 Alternative 2 Existing and Proposed Crossings Sheet 11 of 20 Raymondville Drain Project

Author : Joel F. Aguirre      Updated : 10/10/2023

DISCLAIMER: RRP Consulting Engineers makes no guarantees as to the accuracy of data used in the construction of this map.



**Legend:**

- Study Corridor
- Existing Drainage Crossing
- Drain Flow
- Crossing Number

N

0    1,000    2,000

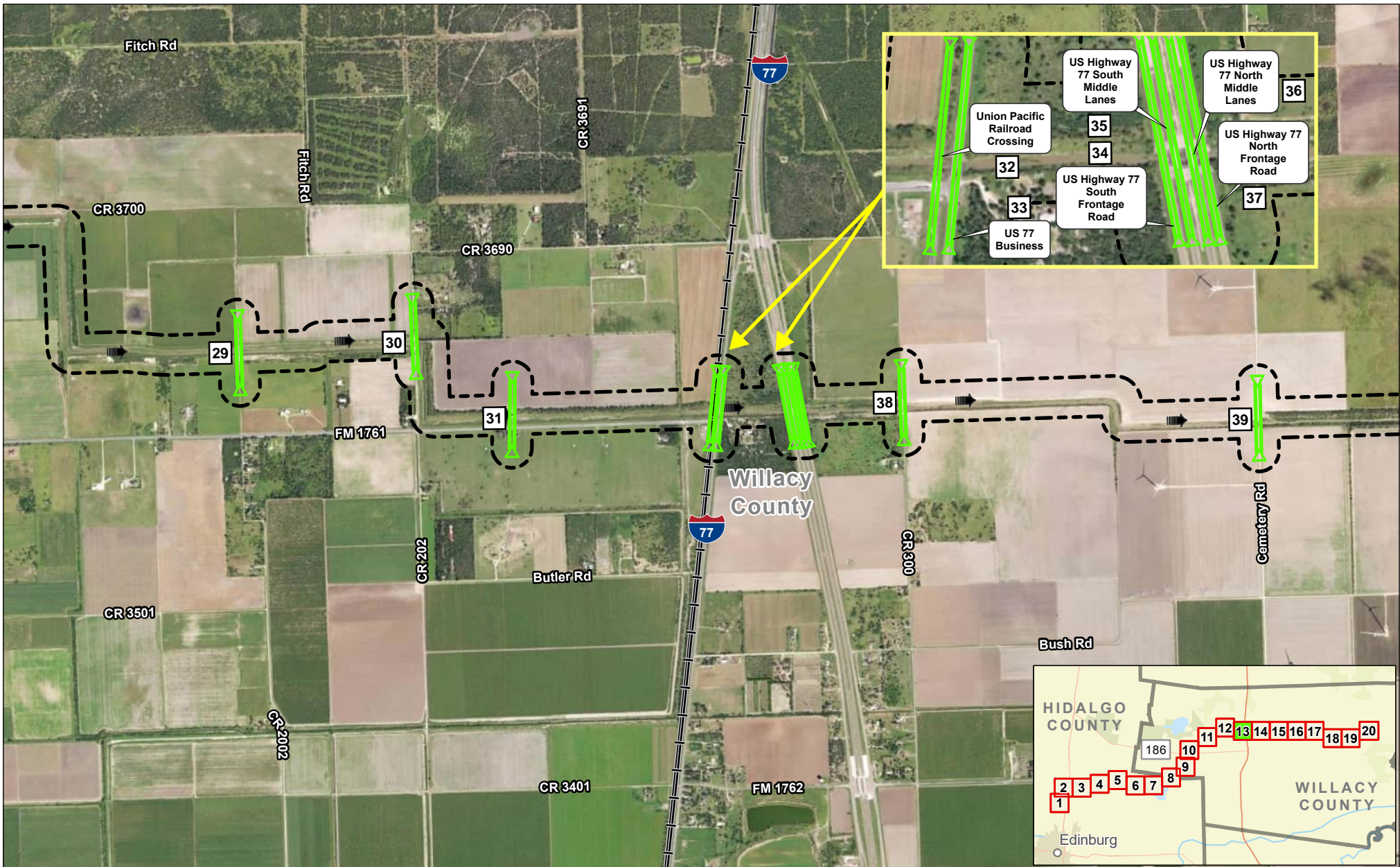
US Feet

HIDALGO COUNTY  
WILLACY COUNTY  
TX

## Exhibit 14 Alternative 2 Existing and Proposed Crossings Sheet 12 of 20 Raymondville Drain Project

Author : Joel F. Aguirre	Updated : 10/10/2023
DISCLAIMER: RRP Consulting Engineers makes no guarantees as to the accuracy of data used in the construction of this map.	

Path: S:\project\448800\_ProjectRepository\GIS\FOP\_Encls-Encl\_Series.aprx



**Legend:**

- Study Corridor
- Drain Flow
- Rail Road
- Existing Drainage Crossing
- Crossing Number

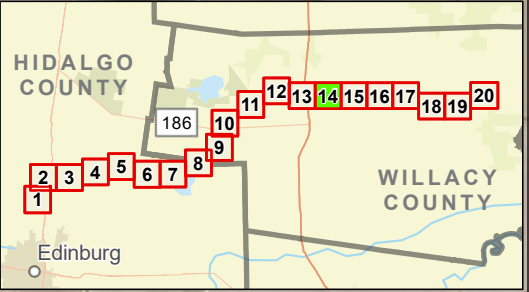
N

0 1,000 2,000  
US Feet

**Exhibit 14**  
**Alternative 2 Existing**  
**and Proposed Crossings**  
**Sheet 13 of 20**  
**Raymondville Drain Project**

Author : Joel F. Aguirre      Updated : 10/10/2023

DISCLAIMER: RRP Consulting Engineers makes no guarantees as to the accuracy of data used in the construction of this map.



**Legend:**

- Study Corridor
- Drain Flow
- Existing Drainage Crossing
- Crossing Number

N

0 1,000 2,000  
US Feet





## Exhibit 14 Alternative 2 Existing and Proposed Crossings Sheet 14 of 20 Raymondville Drain Project

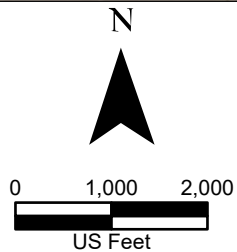
Author : Joel F. Aguirre	Updated : 10/10/2023
DISCLAIMER: RRP Consulting Engineers makes no guarantees as to the accuracy of data used in the construction of this map.	

Path: S:\project\4408000\_ProjectInventory\GIS\PDF\_Export\End\_Series.aprx



**Legend:**

-  Study Corridor
-  Drain Flow
-  Existing Drainage Crossing
-  Crossing Number



**Exhibit 14**  
**Alternative 2 Existing**  
**and Proposed Crossings**  
**Sheet 15 of 20**  
**Raymondville Drain Project**

Author : Joel F. Aguirre      Updated : 10/10/2023  
 DISCLAIMER: RRP Consulting Engineers makes no guarantees as to the accuracy of data used in the construction of this map.



**Legend:**

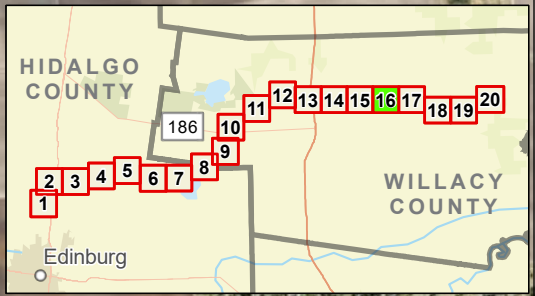
- Study Corridor
- Drain Flow
- Existing Drainage Crossing
- Crossing Number

N

0    1,000    2,000

US Feet

HIDALGO COUNTY  
WILLACY COUNTY  
TX

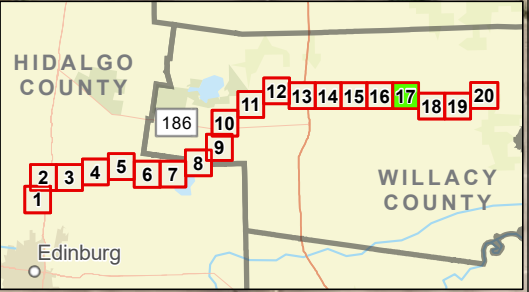


## Exhibit 14 Alternative 2 Existing and Proposed Crossings Sheet 16 of 20 Raymondville Drain Project

Author : Joel F. Aguirre	Updated : 10/10/2023
--------------------------	----------------------

DISCLAIMER: RRP Consulting Engineers makes no guarantees as to the accuracy of data used in the construction of this map.

Path: S:\project\440800\_ProjectRepository\GIS\PDF\_Books\Exh\_Series.aprx



**Legend:**

- Study Corridor
- Drain Flow
- Existing Drainage Crossing
- Crossing Number

N

0      1,000      2,000

US Feet

HIDALGO COUNTY  
WILLACY COUNTY

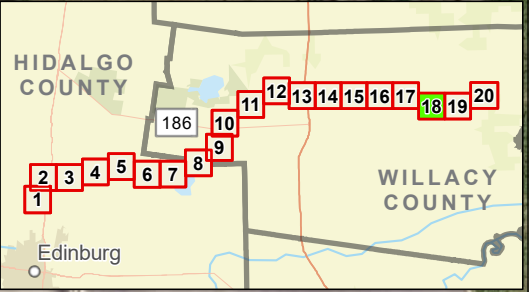
TX

## Exhibit 14 Alternative 2 Existing and Proposed Crossings Sheet 17 of 20 Raymondville Drain Project

Author : Joel F. Aguirre	Updated : 10/10/2023
--------------------------	----------------------

DISCLAIMER: RRP Consulting Engineers makes no guarantees as to the accuracy of data used in the construction of this map.

Path: S:\project\4108000\_Project\Raymondville\GIS\PDF\_Export\Exh-17\_Series.aprx



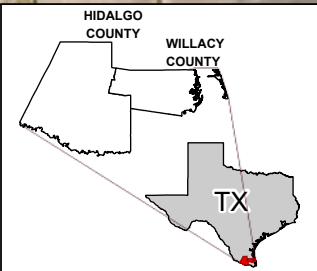
**Legend:**

- Study Corridor
- Drain Flow
- Existing Drainage Crossing
- Crossing Number

N

0    1,000    2,000

US Feet

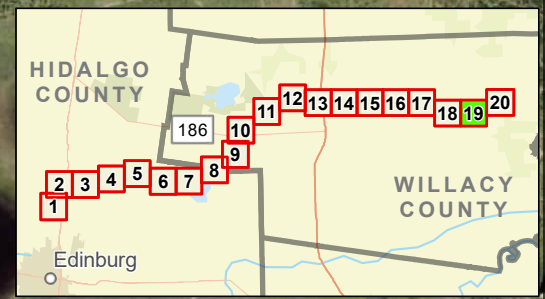


## Exhibit 14 Alternative 2 Existing and Proposed Crossings Sheet 18 of 20 Raymondville Drain Project




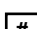
Author : Joel F. Aguirre    Updated : 10/10/2023

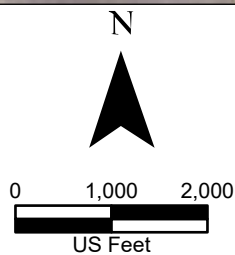
DISCLAIMER: RRP Consulting Engineers makes no guarantees as to the accuracy of data used in the construction of this map.

Path: S:\project\418000\_ProjectRepository\GIS\PDF\_Books\Exh\_Series.aprx



**Legend:**

-  Study Corridor
-  Drain Flow
-  Existing Drainage Crossing
-  Crossing Number



**Exhibit 14**  
**Alternative 2 Existing**  
**and Proposed Crossings**  
**Sheet 19 of 20**  
**Raymondville Drain Project**

Author : Joel F. Aguirre      Updated : 10/10/2023

*DISCLAIMER: RRP Consulting Engineers makes no guarantees as to the accuracy of data used in the construction of this map.*



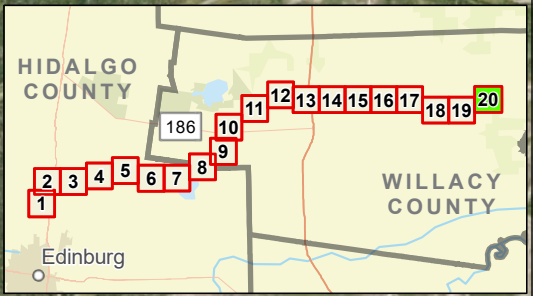
**Legend:**

- Study Corridor
- Drain Flow
- Existing Drainage Crossing
- Crossing Number

N

0    1,000    2,000

US Feet



## Exhibit 14 Alternative 2 Existing and Proposed Crossings Sheet 20 of 20 Raymondville Drain Project

Author : Joel F. Aguirre      Updated : 10/10/2023

DISCLAIMER: RRP Consulting Engineers makes no guarantees as to the accuracy of data used in the construction of this map.

Path: S:\project\4408000\_ProjectInventory\GIS\FOP\_EndUse\_End\_Series.aprx